

# DESCRIBING THINGS

## Lost property

- A British Rail Lost Property, Waterloo.  
 B Oh, good morning. I left my briefcase on the train this morning. I wondered if it had been handed in.  
 A Which train, sir?  
 B Sorry, the 7.47 from Bournemouth.  
 A Can you describe the briefcase, sir?  
 B Er ... yes. It's sort of a ... well, an average-sized, rectangular, black leather briefcase with brass locks.  
 A We've got rather a lot like that, sir. Did it have your name on it?  
 B No, not my name. But it's got the initials 'J.R.' near the handle.  
 A Hang on, then, sir. I'll just go and have a look.

### Exercise 1

Imagine you have lost something. Describe it to your partner without telling him what it is. Your partner has to guess.

## Stolen car

- A Metropolitan Police.  
 B My car's been stolen! It's gone!  
 A Calm down, sir. Could I have your name and address?  
 B Yes, Richard Lockwood, 3 Park Terrace, W.C.13.  
 A May I have a description of the vehicle, sir?  
 B It's a 1982 Escort, a silver-blue, four-door 1300GL model. Oh, and it's got a dark blue stripe

along the sides, and a dent in the nearside front wing.

- A But what's the registration, sir?  
 B PSV 439Y.  
 A I've got good news for you, sir. It hasn't been stolen. It's been towed away. It was parked on a double yellow line. You can collect it from the Police Compound, and you'd better bring your cheque-book with you!

### Exercise 2

Describe somebody's car. Describe a car you would like to own.

## The estate agent

- A Rebecca Trueman speaking.  
 B Ah, Mrs Trueman. This is Fox and Connor, the estate agents. I think we've found a house that you may be interested in.  
 A Could you tell me something about it?  
 B It's in Redhill, near the station, as you requested. It's a rather attractive four-bedroomed 1930s red-brick property. It's in very good decorative order, with a fitted kitchen.  
 A And the garden?  
 B There's a large, mature garden. Would you like to view it?  
 A Yes, I think it's worth a look. Could you put the details in the post?

### Exercise 3

Describe somebody's house. Describe a house you would like to live in.

### Exercise 4

Describe these rooms. Describe your ideal room. Describe the furniture you would put in it, and where you would put it. Describe a café or a restaurant that you have visited. Describe a room or office in the school.



### Exercise 5

Try and describe an object to a partner using the diagram below. Your partner guesses what it is.

Note: This diagram shows the usual order of Adjectives. You won't often find them all in one sentence.

How much/ many?	What's it like?	How big?	What shape?	How old?	What colour?		What's the pattern?	Where's it from?	What's it made of?	What is it?
a/an	beautiful	little	square	old	pale	red	check	French	silk	scarf
one	nice	small	round	new	light	yellow	striped	English	cotton	blouse
three	ugly	medium-sized	oval	modern	bright	green	plain	Japanese	wooden	desk
some	clean	average-sized	rectangular	antique	dark	blue	flowered	German	leather	car
a few	dirty	large	pointed	19th century		brown	spotted	Italian	gold	house
several	cheap	big	triangular	1930s		black		Roman	metal	box
a lot of	expensive	long	flat	1982		white		Parisian	paper	



# DESCRIBING THINGS

## Lost property

- A British Rail Lost Property, Waterloo.  
 B Oh, good morning. I left my briefcase on the train this morning. I wondered if it had been handed in.  
 A Which train, sir?  
 B Sorry, the 7.47 from Bournemouth.  
 A Can you describe the briefcase, sir?  
 B Er ... yes. It's sort of a ... well, an average-sized, rectangular, black leather briefcase with brass locks.  
 A We've got rather a lot like that, sir. Did it have your name on it?  
 B No, not my name. But it's got the initials 'J.R.' near the handle.  
 A Hang on, then, sir. I'll just go and have a look.

### Exercise 1

Imagine you have lost something. Describe it to your partner without telling him what it is. Your partner has to guess.

## Stolen car

- A Metropolitan Police.  
 B My car's been stolen! It's gone!  
 A Calm down, sir. Could I have your name and address?  
 B Yes, Richard Lockwood, 3 Park Terrace, W.C.13.  
 A May I have a description of the vehicle, sir?  
 B It's a 1982 Escort, a silver-blue, four-door 1300GL model. Oh, and it's got a dark blue stripe

along the sides, and a dent in the nearside front wing.

- A But what's the registration, sir?  
 B PSV 439Y.  
 A I've got good news for you, sir. It hasn't been stolen. It's been towed away. It was parked on a double yellow line. You can collect it from the Police Compound, and you'd better bring your cheque-book with you!

### Exercise 2

Describe somebody's car. Describe a car you would like to own.

## The estate agent

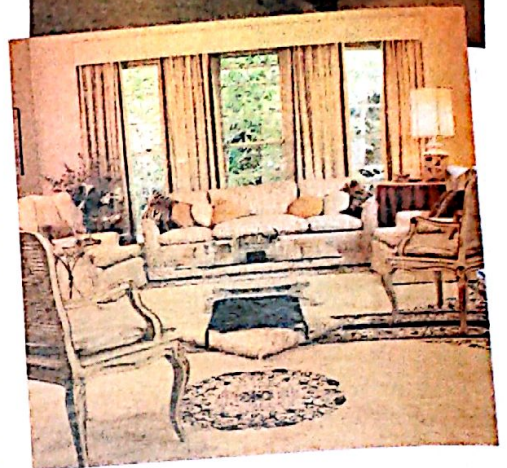
- A Rebecca Trueman speaking.  
 B Ah, Mrs Trueman. This is Fox and Connor, the estate agents. I think we've found a house that you may be interested in.  
 A Could you tell me something about it?  
 B It's in Redhill, near the station, as you requested. It's a rather attractive four-bedroomed 1930s red-brick property. It's in very good decorative order, with a fitted kitchen.  
 A And the garden?  
 B There's a large, mature garden. Would you like to view it?  
 A Yes, I think it's worth a look. Could you put the details in the post?

### Exercise 3

Describe somebody's house. Describe a house you would like to live in.

### Exercise 4

Describe these rooms. Describe your ideal room. Describe the furniture you would put in it, and where you would put it. Describe a café or a restaurant that you have visited. Describe a room or office in the school.



### Exercise 5

Try and describe an object to a partner using the diagram below. Your partner guesses what it is.

*Note: This diagram shows the usual order of Adjectives. You won't often find them all in one sentence.*

How much/ many?	What's it like?	How big?	What shape?	How old?	What colour?		What's the pattern?	Where's it from?	What's it made of?	What is it?
a/an	beautiful	little	square	old	pale	red	check	French	silk	scarf
one	nice	small	round	new	light	yellow	striped	English	cotton	blouse
three	ugly	medium-sized	oval	modern	bright	green	plain	Japanese	wooden	desk
some	clean	average-sized	rectangular	antique	dark	blue	flowered	German	leather	car
a few	dirty	large	pointed	19th century		brown	spotted	Italian	gold	house
several	cheap	big	triangular	1930s		black		Roman	metal	box
a lot of	expensive	long	flat	1982		white		Parisian	paper	



# DESCRIBING PEOPLE

Listen to these people talking about their friends. Look at the example. Complete the other columns.

Name	Donna	Collin	Janet	Robert
Age	late teens			
Build	good figure			
Height	fairly tall			
Hair colour	black			
Hairstyle	long, wavy			
Face	heart-shaped, turned-up nose, full lips			
Eyes	blue, long eyelashes			
Complexion	olive-skinned			
Distinguishing features	dimples			
Dress				
Personality	lively, talkative			

Look at this

Age	Build	Height	Hair colour	Hairstyle	Face	Distinguishing features	Personality
young	fat	1.70 m	black	long	thin	beard (M)	quiet
middle-aged	thin	medium height	brown	short	long	moustache (M)	reserved
elderly	slim	average height	red	straight	round	side-burns (M)	thoughtful
old	plump	below average	fair	wavy	oval	unshaven (M)	calm
in his/her 30's	medium-build	tall	blonde	curly	square	clean-shaven (M)	moody
in his/her late teens	well-built (M)	short	grey	neat	heart-shaped (F)	a scar	unsociable
in his/her mid-20's	broad-shouldered (M)	tallish	white	untidy	high cheekbones	a beauty-spot (F)	sociable
in his/her early 40's	overweight	shortish	died	with plaits (F)	high forehead	a mole	sophisticated
			a brunette (F)	a fringe	thin lips	with freckles	lively
			a blonde (F)	swept back	full lips	with dimples	cheerful
			a blonde (F)	in a bun (F)	long nose	with spots	amusing
			a redhead (F)	pony-tail (F)	straight nose	with wrinkles	polite
			mousey	bald (M)	turned-up nose	with lines	reliable
			dark	balding (M)	broken nose	with glasses	talkative
				thinning (M)	a cleft chin	(well) made-up (F)	aggressive
				receding (M)	a pointed chin		friendly
					double chin		shy

Describe these people. Describe yourself, another student, a famous person.

